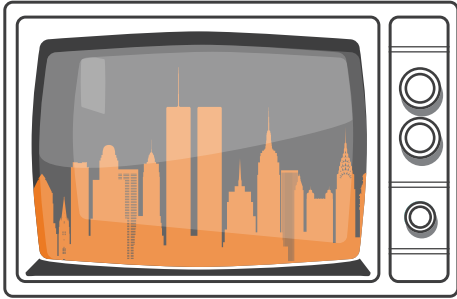


# THIRD<sup>2</sup>ORAIL

ANNIVERSARY <sup>th</sup> SEASON



## RECENT TRAGIC EVENTS

by Craig Wright  
directed by Founding Artistic  
Director Scott Yarbrough

November 7-23, 2025  
Third Rail at CoHo Theatre



Third Rail Repertory Theatre lives and works on the stolen ancestral lands of the Multnomah, Wasco, Cowlitz, Kathlamet, Clackamas, Bands of Chinook, Tualatin Kalapuya, Molalla, and many other Tribes who made their homes, and continue to make their homes, along the Willamette and Columbia rivers.

While it is important to acknowledge the lands we occupy, and the continued presence of the Indigenous communities from whom the lands were seized, these words are meaningless without direct action to address the injustices faced by Indigenous members of our community. There are many Native-led local organizations on the ground every day working on policy initiatives, providing education, offering resources, and more. Learning about these organizations, supporting their work, and joining in their efforts are a few ways all of us can take action right now.

Below are just a handful of the organizations we can all uplift and support.

### **Future Generations Collaborative**

*[fgcpdx.org](http://fgcpdx.org)*

The Future Generations Collaborative is a collective impact partnership between Native serving and Native specific organizations, institutions, governments, and community members. We do this through community engagement, re-indigenizing research and evaluation, strategic policy advocacy, and innovative education and technical assistance.

### **Native American Youth and Family Center**

*[nayapdx.org](http://nayapdx.org)*

Founded by the community, for the community, NAYA is a regional center for Native resilience and self-determination. We wrap community in culturally specific programs, steward generational impacts, amplify community victories, and share a culture of reciprocity. Together, we heal historical traumas, restore balance to our lives, and achieve thriving Indigenous futures.

### **Northwest Native Chamber**

*[nwnc.org](http://nwnc.org)*

Northwest Native Chamber is dedicated to working with all members of the community to transform the economic landscape for Native and Tribal people in the Northwest.

COMING SOON...



## A MIRROR

by Sam Holcroft  
directed by Isaac Lamb

**February 27 - March 15, 2026**

We cordially invite you to the wedding of Leyla and Joel, being held in accordance with this country's constitutional and governmental edicts. The ceremony will begin once all the guests have arrived. Please be aware: at the time of the signal, a transformation will occur. This performance is being staged without a license from the Ministry.

Welcome to Sam Holcroft's *A Mirror*: a meta-theatrical, multi-layered exploration of censorship and storytelling that twists, excavates, and turns inside out your expectations of what's coming next.

## X

by Alistair McDowall  
directed by Rebecca Lingafelter

**May 22 - June 7, 2026**

Stranded in the cosmos, far away from the world you know, what remains that roots you to home?

In the distant future, a group of explorers and scientists are abandoned inside an isolated research base on Pluto. All contact with Earth has ceased. They are unable to leave. As impatience gives way to paranoia, time disintegrates, reality is questioned, and strange visitations encroach. Faced with rapidly escalating alienation, the galactic castaways fight to retain their humanity and the interpersonal bonds on which their survival depends.

Science fiction meets cosmic horror meets psychological drama in the propulsive final play of Third Rail's 20th Anniversary Season.



Learn more and buy tickets  
at [www.thirdrailrep.org](http://www.thirdrailrep.org)

Become a Member for access  
to every Main Stage production.



# OFF THE RAILS: AN EVENING OF THIRD RAIL STORYTELLING

Everyone has a story to tell. In this brand new Third Rail programming, we invite YOU to take the stage—or join the audience—for an evening of storytelling.

Register for a workshop series in which local teaching artist Sascha Blocker guides you through the process of discovering and shaping the story that's inside you. Anyone can participate—especially those who do not self-identify as performers! Each workshop series culminates with a presentation to friends, family, and community members. This is an invitation to bravely take the stage, create and deepen our community connections, and enjoy each other's company in a new way befitting of our 20th Anniversary Season. We can't wait to hear your story.

## *Off the Rails Workshop Dates*

### November/December Series

First workshop: *November 17*

Presentation: *December 9*

### February/March Series

First workshop: *February 3*

Presentation: *March 3*

### May Series

First workshop: *May 5*

Presentation: *May 27*



Join the  
Audience



Register as a  
Storyteller

Learn more at [www.thirdrailrep.org/storytelling](http://www.thirdrailrep.org/storytelling)

# RECENT TRAGIC EVENTS

by Craig Wright  
directed by Founding Artistic Director Scott Yarbrough

## CAST

Waverly ..... Emily Eisele  
Nancy ..... Rose Proctor  
Andrew ..... Ben Tissell\*  
Ron ..... Rolland Walsh\*

## CREATIVE TEAM

Director ..... Scott Yarbrough  
Writer ..... Craig Wright  
Stage Manager ..... Kristina Mast\*  
Production Stage Manager ..... Stephanie Gaslin  
Lighting Designer ..... Samantha “Sam” Kemp  
Assistant Lighting/Programmer ..... Rachel Errico  
Scenic Designer ..... Bryan Boyd  
Props Designer ..... Samuel Manilla  
Costume Designer ..... Bobby Brewer-Wallin  
Co-Sound Designer ..... Saibi Khalsa  
Co-Sound Designer ..... Cullen Elliott  
Puppet Consultant ..... liz HOWLS  
Dramaturgical Assistant ..... Niels Truman  
Technical Director and Builder ..... Eric Adams  
Lead Electrician ..... Joshua Yoon  
Scenic Painter ..... Elecia Beebe  
Production Assistant ..... Yolanda Porter  
Lighting Mentor ..... Solomon Weisbard  
Wardrobe ..... Erin MacGillivray

Playwrights Horizons, Inc., New York City, produced the New York Premiere of *Recent Tragic Events* Off-Broadway in 2002.

The play was originally produced August 19, 2002 by Woolly Mammoth Theatre Company at the Aaron and Cecile Goldman Theatre in Washington, D.C.

RECENT TRAGIC EVENTS will run approximately 2 hours with one intermission.

Cover photo by Owen Carey; program design by Rene Choy

## SEASON SPONSOR

RONNI LACROUTE

## OUR SPONSORS



\*Appearing through an Agreement between this theatre, Third Rail Repertory Theatre, and Actors' Equity Association, the Union of Professional Actors and Stage Managers in the United States.

Actors' Equity Association ("Equity"), founded in 1913, is the U.S. labor union that represents more than 51,000 professional Actors and Stage Managers. Equity fosters the art of live theatre as an essential component of society and advances the careers of its members by negotiating wages, improving working conditions and providing a wide range of benefits, including health and pension plans. Actors' Equity is a member of the AFL-CIO and is affiliated with FIA, an international organization of performing arts unions. #EquityWorks

## Special Thanks:

Beaudry's Custom Woodworking  
Broadway Rose Theatre  
Bryan Boyd  
Karen Hill  
New Avenues INK  
Portland Center Stage  
Portland State University  
Solomon Weisbard  
Steve Hohenboken



Welcome to the first Main Stage show of Third Rail’s 20th Anniversary Season, and thank you for being here. It is hard for me to believe it has been 20 years. As I reflect on the breadth of stories and experiences shared over the past two decades—and the rigor, passion, and determination exhibited by the entire company of artists, production teams, board members, volunteers, funders, advocates, audiences, and colleagues—I am deeply moved and very grateful to be a part of it. Whether you have been attending Third Rail productions since our very first performance in 2005, or you are joining Third Rail for the first time today, we thank you for showing up with care, curiosity, and support. You make this all possible.

*Recent Tragic Events* was our inaugural production in 2005, back when Third Rail was a fierce and scrappy group of artists propelled by a vision to make Portland a home for theatre imbued with professionalism, vigor, and a consistent attention to detail. I am not a founding company member, but my beloved husband Philip and I arrived in Portland around the same time Scott Yarbrough, Stephanie Gaslin, Tim True, Val Stevens, Mike O’Connell, and Rachel Brodkey were hatching their ambitious plan to start a company. John Steinkamp joined as the first non-founding member after the first production.

I was introduced to Third Rail through Stephanie Gaslin, with whom I worked at a restaurant. She played Waverly in that first production. I remember seeing the show and being struck by the seismic shift that was coming from this exceptional group of theatre makers. That experience would be a defining moment in my artistic life, and spoke to the intelligent and visceral approach to producing plays, attacking the playwright’s text in-depth, and creating organic physical responses to the playwright’s intentions that would go on to define our work.

We carry this work forward as we kick off the season with the show that started it all. I invite you to join us with fresh eyes and ears. How does the play land for you today? Many things have changed and evolved since 2005—in our company, in the city, and in the world. Still, the foundation of what we do remains the same. And I am very happy to have Founding Artistic Director Scott Yarbrough return as director, and Stephanie return to the cast.

We are living under undeniably extreme times. Every day, we are tasked with leading our lives while simultaneously digesting an onslaught of alarming news and inflammatory rhetoric. Many of us, and many of our loved ones, are experiencing hardship on a scale that is difficult to comprehend. It is a small miracle, then, that, through such difficulty, the goodness of our humanity persists—stubbornly, emphatically, with compassion and joy. We see it in the support networks that form amongst our communities. We see it in the creativity and determination demonstrated by those working every day for change. And we see it in the art we make, and the stories we tell in concert with you. This is what I hope the productions we share over the course of Third Rail’s 20th Anniversary Season bring: stories that reveal the persistence of the best of humanity even amongst the extremity of circumstance. May we hold each other close and continue to express that which makes us human.

Maureen

I love this play. So much. Not just for the play itself, with all of its sweeping ideas, fragile characters, emotional swings, and mischievous theatricality. But also because of what it meant to me as a director and to this fledgling company. Its success launched Third Rail into the Portland theatre community much like a hyperactive kid doing a cannonball off the high dive at a pool party. The play planted an aesthetic flag that we would use to define our work for years.

It's a gift to have the opportunity to revisit the play and to consider how it will resonate almost a quarter century from the events it depicts. A play that was once fiercely of its moment must now, weirdly, be considered a period piece. And yet, the feelings that the characters are trying to navigate in September 2001 now carry a degree of prescience and familiarity that would have been (blessedly) impossible to predict back then. What felt foreign and singular then, can now feel exhaustingly routine.

I'm so grateful to have the memories of working on *Recent Tragic Events* 20 years ago. I'm grateful to have a chance to look at it again with (hopefully) wiser eyes, a richer bag of tools, and young actors with a very different relationship to that September day than I do. I'm grateful that Craig Wright allowed a young director with questionable abilities to direct the first public reading of his play *Orange Flower Water* in the summer of 2001, for letting us produce four of his plays, for suggesting he write a play for the company, and for providing so many defining artistic experiences for me. And I'm grateful to Maureen for floating the idea of reviving *Recent Tragic Events* for this anniversary season and for asking me to direct it.

Finally, it's impossible for me to communicate how grateful I am for the friendships that were forged with the founding members during Third Rail's original production of this play. They made me a better director and a better person and challenged me in ways that were often annoyingly uncomfortable and unexpectedly fruitful. We are friends to this day and I expect we will remain so well beyond the point where we can't remember who each other is anymore.

And now . . . *Recent Tragic Events*.

### Thanks to Portland's Art Tax...



- › Every elementary school in the city now has an art, music, or dance teacher.
- › Organizations like Third Rail can bring exciting, thought-provoking work to theatre audiences.
- › Third Rail and dozens of nonprofit arts organizations are expanding access to the arts for underserved communities through programs like Arts For All.

**Thank you, Portlanders!**

**JOIN US AS WE CATCH  
LIGHTNING IN A  
BOTTLE FOR ANOTHER  
BREATHTAKING YEAR.  
BECOME A MEMBER TODAY.**

**Welcome to Third Rail's 20th Anniversary Season.** Become a Member to join us as we celebrate our legacy and boldly look ahead to what's next. Experience world-class productions, screenings, readings, and events—and be part of a community of artists and audiences as passionate about theatre as you. During this landmark year, we want you with us for every uniquely Third Rail night at the theatre.



PHOTO BY OWEN CAREY

Learn more and join at [thirdrailrep.org/become-a-member](https://thirdrailrep.org/become-a-member)

## “World History, Man”

Craig Wright’s *Recent Tragic Events* takes place on the day after 9/11. The play examines the catastrophic event through the lens of four characters as they make attempts at reconciling their quotidian lives with the incomprehensible incidents of the day before. As you watch the play, consider the ways in which each character reckons with the tragedy. How do they speak about it, refer to it, and frame it? When is it considered through the big-picture lens of history and politics, and when is it felt on a personal scale? How do the events of 9/11 reveal—and, perhaps, change—their core beliefs?

*Recent Tragic Events* premiered in 2002 and was first produced at Third Rail in 2005. At the time, 9/11 was a contemporary world event that everyone in the audience lived through and likely associated with vivid and specific memories. Two decades later, the play is now, in its way, a period piece.

What does it mean to produce this play in 2025?

How is your experience as an audience member impacted by the current sociopolitical moment?

What is different about how the play resonates today vs. how you remember—or imagine—it resonating two decades ago?

## “Do What You Gotta Do”

Man is condemned to be free. . . From the moment that he is thrown into this world he is responsible for everything he does.

— Jean-Paul Sartre,  
“Existentialism is a Humanism”

Men are mistaken in thinking themselves free. . . What the will is, and how it moves the body, none of them know.

— Baruch Spinoza, *Ethics*

Do human beings possess free will, or are all events in the world, including our actions, predetermined? This philosophical quandary has informed centuries of debate, and serves as the thematic underpinning of *Recent Tragic Events*. It is also a catalyzing question for each of its characters, who have just lived through 9/11: an event which seemed to exist outside the scope of expectation or control.

Take note of moments when experiences lead characters to question their beliefs surrounding free will. Do these beliefs change over the course of the play? Does the play itself take a stance on the philosophical quandary, or is it more concerned with posing the questions?

## “I’m an Actor, and This Is a Play”

*Recent Tragic Events* features self-referential moments that remind its audience that the play is, indeed, a work of theatre. It is formally inventive and relishes in the theatrical demand for a willing suspension of disbelief. As you encounter these self-referential elements, consider why playwright Craig Wright layered them in. How do they deepen and inform the work’s themes? How do they impact your experience of the play?



**EMILY EISELE**

(she/her) (Waverly) is grateful to be a part of Third Rail's 20th Anniversary Season as a former Mentee. She is an

alum of the 2014-15 Mentorship Program, during which time she cultivated a passion for creating ensemble works and accidentally stumbled into a career in nonprofit finance and administration. (Thank you, Philip.) Local performing credits include Third Rail (*The Music Man* concert staging), Artists Repertory Theatre (*I and You; American Hero*), and CoHo Productions (*Beethoven and Chopin Meet The Bride of Frankenstein*). Emily is a co-founder and current Managing Director for Bedrock Theatre, with whom she has written, composed, and performed for *Sun Songs & Moon Tunes*, *Hibernate*, *Persephone*, and *The Nightingale*. Most recently with Bedrock, Emily created the audio production series *CoastWatch & Listen*, a community science & storytelling collaboration produced in partnership with Oregon Shores Conservation Coalition. Tune in at [bedrocktheatre.com](http://bedrocktheatre.com).



**ROSE PROCTOR**

(she/her) (Nancy) is a performer, deviser, and visual artist from Eugene, Oregon. She attended

Portland Experimental Theatre Ensemble's Institute for Contemporary Performance, was a member of the Third Rail Mentorship program, and is a graduate of the National Theater Institute.



**BEN TISELL** (he/

him) (Andrew) is a Portland-based actor, singer, musician, and educator. He is overjoyed to

return to Third Rail, previously appearing in *The Angry Brigade* in 2017. Locally, Ben has also appeared onstage at Portland Center Stage, Portland Playhouse, Broadway Rose Theatre, Lakewood Theatre, Profile Theatre, and others. In addition to theatre, Ben is a singer-songwriter whose music can be found on Spotify and other streaming platforms. Ben also currently serves as a theatre professor and artistic director at George Fox University. See more of his work and upcoming projects at [BenTissell.com](http://BenTissell.com).



**ROLLAND WALSH**

(he/him) (Ron) is excited to return to the stage with Third Rail Repertory Theatre. Previously in

*Infinite Life, Kiss, Revolt. She Said. Revolt Again., Mr. Kolpert, Static, The Night Alive, The Beauty Queen of Leenane, Noises Off, A Noble Failure*. Rolland is a graduate of The American Repertory Theater / Moscow Art Theater School Institute for Advanced Theater Training at Harvard University and is a proud member of Actors' Equity Association.



**STEPHANIE**

**GASLIN** (she/her/they/them) (The Stage Manager) is an actor, dialect/voice coach, and an original

founding company member of Third Rail. She is beyond thrilled to be contributing to this 20th Season as an actor. She considers Third Rail as an artistic home. As an actor for Third Rail, she has been seen in: *Recent Tragic Events* (2005), *The Lonesome West*, *Grace*, *Dead Funny*, *Fabuloso*, *The Gray Sisters*, *The Wonderful World of Dissocia*, and *Collapse*. Regionally: The National Shakespeare Company, Theatre Ten Ten, Cincinnati Playhouse in the Park, The Monomoy Theatre, Artists

**CRAIG WRIGHT** (Writer) is an American playwright and TV writer. He was born in San Juan, Puerto Rico and attended Minnesota State University Moorhead. After college, Wright went to seminary school, where he wrote two plays inspired by his experiences there: *The Pavilion* and *Orange Flower Water*, which was first performed in 2002 and earned positive reviews. After working as an associate pastor in St. Paul, Minnesota, he was invited to meet with producers of the TV series *Six Feet Under*, who hired him as a writer. He eventually became the show's Executive Story Editor and was later hired as supervising producer and writer on the series *Lost*.

Wright's plays include both comedies and dramas. In addition to *Orange Flower Water*, he has three other plays set in Pine City, Minnesota: *Molly's Delicious*, *The Pavilion*, and *Melissa Arctic*. In 2002, his play *Recent Tragic Events*, an ensemble comedy about the existential aftermath of 9/11, premiered off-Broadway. Wright is also a musician and co-leads an alternative rock band named The Tropicals.



Repertory Theatre, Portland Center Stage, The Haven Project, Clackamas Repertory Theatre, and Triangle Theatre. She has served as a dialect coach for Third Rail over the years as well as with many companies in the region. She holds a BA degree in theatre from Southern Oregon University and an MFA in Acting from Ohio University. Currently, she spends most of her working day helping students find their voice. She would like to dedicate this show to her son who recently moved up north to find his voice.

**SCOTT YARBROUGH** (he/him) (Director) is the Founding Artistic Director of Third Rail. He received degrees in Theatre from

Oklahoma Baptist University (BA), Louisiana State University (MA), and Ohio University (MFA). Directing credits: *Two Pints*, *Radiant Vermin*, *The Events*, *The Nether*, *Mr. Kolpert*, *Static*, *The Night Alive*, *The Beauty Queen of Leenane*, *Noises Off*, *Sweet and Sad*, *That Hopey Changey Thing*, *Collapse*, *The Pain and the Itch*, *Last of the Boys*, *The Wonderful World of Dissocia*, *Kiss Me Like You Mean It*, *The Gray Sisters* (World Premiere), *The Lying Kind*, *Fabuloso*, *A Skull in Connemara*, *Dead Funny*, *Nobody Here But Us Chickens*, *Shining City*, *Grace*, *A Lesson from Aloes*, *Number Three* (World Premiere), *The Pavilion*, *The Lonesome West*, *Dirty Story*, *Recent Tragic Events* (2005), *Grotesque Playground Injuries*,

*Rosencrantz and Guildenstern Are Dead*, and *Chesapeake*.

**KRISTINA MAST** (she/her) (Stage Manager) is a stage manager based in Portland. Select Third Rail stage management credits: *Infinite Life*; *A Case for the Existence of God*; *Mary Jane*; *I'm Black When I'm Singing*, *I'm Blue When I Ain't*; *Blink*; *Melancholy Play*; *John*; *Kiss*; *Revolt. She Said*, *Revolt Again.*; and *Men on Boats*. She has also worked with CoHo Theatre, Portland Playhouse, Portland Experimental Theatre Ensemble (PETE), Portland Center Stage, and Third Angle New Music. She is a company member and resident stage manager for PETE.

**SAMANTHA “SAM” KEMP** (she/her) (Lighting Designer) is a Portland-based creator, artist, and lighting designer for live performance. Born and raised in the tiny town of Lindenhurst, New York before moving to Las Vegas in her adolescence, Sam has always managed to weasel her way into artful spaces despite cultural pressures to stick to the status quo. Recent design credits include *8-Track: Sounds of the 70s* and *Les Misérables* at Broadway Rose, *The Other Place* and *Chekhov!: 3 Farces* at 21ten Theatre, *Waking the Witch* with Renegade Opera, and *Design for Living* at Imago Theatre. She also has served as an assistant and associate designer for many other works, including *Infinite Life* with Third Rail designed by Solomon Weisbard and *Amélie* designed by Dan Meeker at Portland Playhouse. She is elated to be working with Third Rail Repertory Theatre again.

**RACHEL ERRICO** (she/they) (Assistant Lighting/Programmer) is a Portland-based electrician and programmer and a proud graduate of Portland State University. She has had the joy of working with OrpheusPDX, Hand2Mouth, and Broadway Rose Theatre. Rachel is passionate about bringing stories to life through light and technology, and she’s

grateful for every opportunity to collaborate with Portland’s vibrant arts community. When she’s not in the theater, she enjoys time with friends, exploring the PNW, and discovering new music.

**BRYAN BOYD** (he/him) (Scenic Designer) is honored to return to Third Rail after designing *A Case for the Existence of God* last Season. A Portland-based scenic designer and educator, Bryan’s other Portland credits include Broadway Rose Theatre Company, Artists Repertory Theatre, and Northwest Children’s Theatre, with additional work in Seattle for Sound Theatre Company and Seattle Music Theatre. Bryan leads the theatre design and technology program at George Fox University and directs the Theatre Design Institute, offering summer courses for theatre teachers and artists. His corporate event design and drafting work for global sportswear, software, and aerospace companies has supported projects across the U.S. and internationally, including at the Academy Museum of Motion Pictures, Royal Holloway University of London, and the 2024 Paris Olympics. He received the Set Design of the Decade Award from BroadwayWorld Portland for *Mamma Mia!* and was

honored as a Scenic Design Faculty Fellow by the Kennedy Center. [bryanboyddesign.com](http://bryanboyddesign.com)

**SAMUEL MANILLA** (he/him) (Props Designer) enjoys making stuff, and doing things. *Recent Tragic Events* is Sam’s debut production with Third Rail Rep. He is also known for his Props Design work with Broadway Rose Theatre (including *Anything Goes*, *Beautiful: The Carole King Musical*, *The Spitfire Grill*, and *Cinderella*) and the Portland Revels (Revels 2024: *Norse Fire*), and his Scenic Construction work for Imago Theatre. Sam received his degree in Theatre from Southern Oregon University, where he designed and managed props for several main stage and student productions.

**BOBBY BREWER-WALLIN** (he/him) (Costume Designer) is a costume designer and Professor of Theatre. With an MFA in costume design from CalArts, he joined the faculty at Willamette University in 2000. He teaches courses in Costume Design, Global Fashion History, and seminars on the subjects of Clothing + Memory, Protest Clothing, The Material Culture of Resistance, Material Culture & the Art of Storytelling, and Voices of the Pacific Northwest. He spent spring 2022 teaching in Ireland at The University of Galway.

Recent theatre designs include *True Story*; *The Revolutionists*; *A Doll's House, Part 2*; *Everybody*; and *Magellanica* at Artists Repertory Theatre; *Las Meninas* at Profile Theatre; *Urinetown* and *Dancing at Lughnasa* at Willamette University; *Mary Jane*, *The Events*, and *The Beauty Queen of Leenane* at Third Rail Repertory Theatre; and *Richard III* and *King Lear* at Arkansas Shakespeare Theatre. <https://bobbybrewerwallin.com>

### **CULLEN ELLIOT & SAIBI**

**KHALSA** (Co-Sound Designers) make up Weirdbird Sound Design: a design team based out of Portland, Oregon. Saibi grew up in Santa Fe and studied sound design at both Sarah Lawrence College and Santa Fe University of Art and Design. Cullen studied sound at Southern Oregon University. They met while working at the Oregon Shakespeare Festival, and have been making art together ever since! Recent credits include *Mother Russia* (Profile Theatre), *A Subtle Kind of Murder* (New Mexico Actors Lab), *Notes from the Field* (Portland Playhouse), and *As You Like It* (Cal Shakes). This is their debut design with Third Rail and it's been an absolute joy so far!

**liz HOWLS** (she/her) is a multimedia artist and puppeteer. She has been creating and building puppet shows for over 25 years. Liz

performs kids' puppet shows with Mucky Duck Theatre and creates avant-garde adult puppet shows with Happy Accident. When not performing she works in stop motion animation as an assistant director. Learn about the latest shows she's performing at [rustbucketproductions.com](http://rustbucketproductions.com).

**NIELS TRUMAN** (he/him) (Dramaturgical Assistant) is a Portland based playwright and deviser. His produced original work includes *The Voiceless Figure*, *Honesty Box*, *The Third Place*, *It's All About Pumpkin*, and *Sasha & Carlyle Make a TikTok*. His full-length play *Online Now* has received multiple staged readings, and his musical *Sam's 21st* (co-written and composed by Duncan Kass) received a reading as part of the 2024 Fertile Ground Festival. Earlier this year, Niels worked with Portland Experimental Theatre Ensemble on *Aw, Hell* after graduating from their Institute for Contemporary Performance. He is also a graduate of the Third Rail Mentorship Program.

**ERIC ADAMS** (he/him) (Technical Director and Builder) is the Technical Director not only for Third Rail, but also for other theatres around the Portland area. This will be his second season working with Third Rail and he is very proud of being part of the team. For the past ten years, Eric worked as

Head Carpenter and Technical Director for Oregon Children's Theatre. Before moving to Portland, he worked for the Kirk Douglas Theatre as the head carpenter for many years. Eric has a small business where he creates kitchenware along with other products people might find a use for. When he is not touching dead trees he is out on his canoe fishing. He is 0 out of 100 on catching anything. He wants to keep it that way. Along with never catching any fish he is also a very compassionate helicopter plant daddy. Lastly, Eric wants to thank his partner and kids for always coming out and supporting him as they get to see the magic of the stage change with each show.

**JOSHUA YOON** (he/him) (Lead Electrician) was born in South Korea and raised in California and Oregon. Joshua is a graduate of Southern Oregon University with a Bachelor of Fine Arts in Theatre and a Bachelor of Science in Computer Science. He is the Lead Electrician at Artists Repertory Theatre and Portland Playhouse. He is also a licensed EMT, and is currently working at AMR. His hobbies include cooking, programming, and riding his motorcycle Bumblebee.

**ELECIA BEEBE** (she/her) (Scenic Painter) lives with her husband in the coastal mountain woods west of Portland, where they

raised their wonderful daughter. She loves opportunities to lose and find herself in creative endeavors. Those have ranged from design, paint and carving for large and small theaters in the area, teaching scenic arts, painting for the ballet (*Napoli*), and local and national opera sets, to tiny stop motion sets and props for commercials, TV and movie sets (*Wendell&Wild*, *The PJ's*, *Coraline*, *Two Balloons*, etc), large carved creatures and hands for Rose Festival floats, drawings for a children's book "High in the Saddle", Oregon Zoo exhibit murals, and View-Master reel art. Theater set painting includes some for Third Rail's early years.


**YOLANDA PORTER** (she/her) (Production Assistant) is a Portland-based producer, actress, and voice-over artist with a passion for storytelling across film, theatre, and audio performance. She has worked on international documentary projects, performed on stage and screen, and voiced commercial and narrative content in both English and

Spanish. Yolie is committed to championing diverse voices in the arts and is honored to serve as Production Assistant on this production and to continue her artistic growth as part of the Third Rail mentorship cohort.

**SOLOMON WEISBARD** (he/him) (Lighting Mentor) has created original works in drama, opera, dance, installation, and music across the U.S., Canada, Dominican Republic, Germany, Greece, Italy, Russia, and Slovenia. New York credits include *Macbeth* (directed by John Doyle at Classic Stage); *The Shape of Things* (created by Carrie Mae Weems at the Park Avenue Armory); *Duat* (Soho Rep); *Men on Boats* (World Premiere: Playwrights Horizons/Clubbed Thumb); and associate lighting design for the Tony Award-winning Broadway revival of August Wilson's *Jitney*. Regionally: Arden, Berkshire Theatre Group, Magic, Merry-Go-Round, Oregon Shakespeare Festival, Pasadena Playhouse, Pittsburgh Public, Portland Stage, Quintessence, TheatreSquared, Westport

Country Playhouse, Writers, and Yale Rep. Locally: OrpheusPDX, Pickathon, Portland Center Stage, Portland Opera, and Portland Playhouse. Solomon is Associate Director of the School of Music and Theater at Portland State University where he seeks to support the next-generation of diverse theater-makers. He earned his MFA from the Yale School of Drama.

**ERIN MACGILLIVRAY** (she/her) (Wardrobe) is a Portland area stage manager and costumer. She is a Third Rail Mentorship Program alum, and this is her second season as Wardrobe for TRRT. Other recent wardrobe credits include working with the Young Professionals Company at Oregon Children's Theatre, where she mentored teen stage managers and costume designers. She has also costume designed for *Spider* (YPs at OCT), *Found Dog Ribbon Dance* (CoHo Productions), and *Persephone* (Bedrock Theatre Company). Erin studied at Whitman College, where she graduated with a BA in Theatre and Classical Studies.

THE  
**CUOMO**   
**THEATRE**  
**CAMPAIGN**



**The Cuomo Theatre Campaign** supports a project that began with **Philip Cuomo's** vision for the future of theatre in NW Portland. This legacy project is centered around the **dream of preserving an artistic home** in Slabtown and securing a sustainable space for artists to create and communities to grow together.



- **Doubles the space of a legacy creative center** for collaboration and innovation with an upgraded black box theatre, rehearsal space, meeting areas, offices, and resource center.
- **Gives three theatre companies a permanent home** where their work is rooted in creativity and allows bold innovation to facilitate deeper creative process.
- **Preserves a vital performance space** for presentation of exceptional, inspiring work; brings artists and audiences together as partners in building a dynamic, vibrant community.

At **The Cuomo Theatre**, student artists, emerging artists, and working artists are supported from resource lab to studio to stage. This collaboration creates an ecosystem for artistic innovation that enhances performing arts on stages across Portland.

To learn more about **The Cuomo Theatre Campaign** and how you can help **bring this dream to life**, please contact Maureen Porter, Artistic Director, at [maureen@thirdrailrep.org](mailto:maureen@thirdrailrep.org).

# DONORS

The list reflects donations received between May 1, 2024 - October 17, 2025. We strive to keep this list up to date and accurate. Please contact [development@thirdrailrep.org](mailto:development@thirdrailrep.org) if there are any corrections or additions. Thank you for your support.

We would also like to thank the people who have supported the Cuomo Theatre Fund and the Cuomo Theatre Collaborative in our work to secure and expand a home for the performing arts in the CoHo Theatre building.

## FOUNDATIONS/ GOVERNMENT/CORPORATE

### \$10,000+

Dream Envision Foundation  
James F. and Marion L. Miller Foundation  
The Kinsman Foundation  
Oregon Cultural Trust  
Raymond Family Foundation  
The Regional Arts & Culture Council, including support from the City of Portland, Multnomah County, and the Arts Education & Access Fund  
Ronni S. Lacroute Fund of the Oregon Community Foundation

### \$4,000-\$9,999

Oregon Arts Commission

### \$500-\$3,999

Leslie Homer Charitable Fund of Community Foundation for SW Washington  
Richard and Mary Rosenberg Fund of Oregon Community Foundation

## INDIVIDUAL

### \$10,000+

David Levine  
Dianne Sawyer and Richard Petersen  
Ellen Fader Charitable Fund  
Full Potential Fund  
John and Jan Swanson  
Joy Strand & Daniel Anderson  
Leslie Kolisch  
Wendy Ware and Dan Gleason

### \$4,000-\$9,999

Ginnie Cooper, in honor of Maureen  
Kat Trumbo & Steve Bunnage, in memory of Philip Cuomo  
Maureen Porter, in honor of Philip Cuomo

### \$2,000-\$3,999

Carl Wilson and Evan Boone, in memory of Philip Cuomo

Christopher Houghton and Donna Jean Paterson  
David and Doreen Chemerow  
Joyce Sjoberg  
Louis Baslaw and Anne Conway  
The Gulick-Schlegel Trust

### \$1,250-\$1,999

Andrew and Donna Wardenaar  
Nancy Kurkinen and Richard Hollway  
Robert Nimmo and Linda Jensen

### \$750-\$1,249

Al and Penny Greenwood  
Barbara and Chuck Carpenter  
Dania A Caron  
Dean and Sara Byers  
Doug Honnold and Julie Michaels  
Eileen Eisenberg, in honor of Michelle Kashinsky  
James Cox and Brenda Nuckton  
Lewellyn Robison  
Linda and Karl Boekelheide  
Marcus Hoffman  
Marvin and Abby Dawson  
Reva Basch  
Stephen and Judith Auerbach

### \$500-\$749

Ann and Robert Sola  
Bill and Sharon Bourque  
Connie Morehouse  
Daniel Bergsvik and Donald Hastler  
David Katz & Lee Katman  
Elsbeth Martindale  
Gina Anzaldo and Bryan Stearns  
Jeanne Eagleson and John Gray  
Jessie Jonas  
Jo Ann Hardy, in honor of Rolland Walsh  
Joann Wiser  
Larry Marxer and Susan Hathaway-Marxer  
Leo Frishberg and Susan Zeidler

Mark Takiguchi and Martha Schlitt  
Martha Mattus  
Mary Chaffin and Lance Murty  
Mary Shaw  
Pancho Savery  
Peter and Mary Hepokoski  
Robin Zukoski and Keith Buchholz  
Rosalie Tank

### \$250-\$499

Aaron Cooper Swor  
Abigail Peterman, in memory of Mark Peterman  
Anonymous  
Arlene Reyes  
Bonnie Reagan  
Caroline Romans  
Chase Rynd  
Connie Rockman  
Danielle Jones-Cartwright  
Diane Herrmann  
Eileen and Alfred Ono  
Elizabeth Anderson  
Gary Taliaferro  
Jim Scott and Elaine Robin  
JoAnn Gilles  
Joyce Lozito  
Julie Lawrence  
Karen and Charles Springer  
Karen Cambarei  
Karen Mitzner and David Lewis  
Kathleen Stephenson-Kuhn  
Kerry and David Cobb  
Kirby McCurtis  
Mary Hirsch  
Meghan Moran and Kirk Masterson  
Mike Carter and Teresa Ferrer  
Nadine Maleski  
Nancy Williams-Baron  
Richard Lewis and Margaret Larson  
Shari and Johnny Powell  
Shuldman-Edmundson Fund of OJCF  
Susan Bach  
Trevelyn Jones

### UP TO \$249

Ali & Howard Shapiro  
Aarisa Smith  
Abby Ross  
Abram Daly  
AC Petersen  
Adelind Coy  
Alex Homer  
Alice Shapiro  
Amanda Gamblin  
Amaya Santamaria  
Amber Elstad  
Amelia Sommer  
Andrea Heid  
Angela Hughes  
Anita Derry  
Anna Marti  
Anonymous  
Anonymous  
Anonymous  
Anonymous  
Anonymous  
Anonymous  
Anonymous  
Anonymous  
Anonymous  
Anonymous, in memory of Barbara Manghelli  
Anonymous, on behalf of Keith from Weekday Soccer  
Antonio Ballestero  
Austin Griffith  
Barbara Brown  
Barbara Bryan  
Barbara Holitsky and Gary McDonald  
Barbara Miner  
Beth Hutchins and Pete Skeggs  
Betsy Cramer  
Bill Scott  
Blake Jensen  
Bob & Nell Bonaparte  
Bob Weinstein & Marta Poore  
Brandon Lenzi  
Brenda Lebegern  
Brian Guerrero and Eve Bernfeld  
Brian Myers and Ellen Walkley  
Brian Thompsen

Bridget Fahrland  
 Britte Marsh  
 Bryan Boyd  
 Carole Manners  
 Carolyn Armstrong  
 Carolyn Whitney  
 Cathy Bernard  
 Charles Grant-Miller  
 Charlotte Rubin  
 Charlotte Zenzano  
 Chen Subramanian Family  
 Cheryl Ching  
 Christopher Guthrie  
 Ciara Wade  
 Claire Kinnison  
 Claire Rigsby  
 Clara Fernández  
 Claudia Myers, in memory of  
   Charlie Myers  
 Colin Ma and Laurie  
   Christensen  
 Con O'Keefe  
 Craig Boretz and Rachelle  
   Jacover  
 Cynthia Hopkins  
 Darrann Durham  
 Daryl Wilson  
 David Goldman & Merilee Karr  
 David Porter, Mary Edmeades  
 David Salniker  
 Deanna Haley  
 Deborah and Alexander  
   Runciman  
 Deborah Correa and Mark  
   Wilson  
 Devon Burrus  
 Devon Wells  
 Diane Fadem, in honor of  
   Michelle Kashinsky  
 Diane Kondrat  
 Dorothy Bocian  
 Douglas Blomgren  
 Dr. Jean Gustin and Janet  
   Douglas  
 Eleanore T. Hunter  
 Elisabeth Geier  
 Eliza Schneider  
 Elizabeth Andanen  
 Elizabeth Cameron  
 Elizabeth Marino  
 Elizabeth Size  
 Ellen Lovell  
 Emily Eisele  
 Emily Weisbard  
 Eric Nace  
 Eugene Baker  
 Gary Guinn  
 Gerald Harp

Grace Dinsdale  
 Greg Bowman  
 Herman Asarnow and Susan  
   Baillet  
 Iris and Alvin Snyder  
 Isaac Lamb and Amy Frankel  
 J Michael Shaughnessy  
 Jakub Kyle  
 Jamie Freyer  
 Jan Westwater  
 Jane Comerford  
 Janet Williamson  
 Jann Lane and Peter Crim  
 Jay Andersen  
 Jayde Blackmar  
 Jeannine Leeper  
 Jed Sutton  
 Jennifer Avian  
 Jennifer Urich  
 Joan Bridgman  
 Joellen Sweeney  
 John Boze  
 John Holland  
 John Milliken  
 John Pioli  
 John Somers  
 Joshha Saulpaw  
 Justine Craig  
 K Misech  
 Karen Barrueto  
 Karen Cristofani  
 Karen Johnson  
 Karen Paladino  
 Katherine Parker  
 Kathleen Birch  
 Kathleen Boylan  
 Kathleen Worley  
 Kevin Kearns  
 Kevin Ober  
 Kira Kamrath  
 Kitt and Butch Dyer  
 Kregg Arntson  
 Krig Alman  
 Lara Miller and Kristy Rastle  
 Laura Barton  
 Laura Lester  
 Laura Orr  
 Laura Potter  
 Laura-Ann La Rosa  
 Lee Leighton  
 Linda and Mark Fristedt  
 Linda Meng  
 Linnea Weaver  
 Lisa Wells  
 Liz Schilling  
 Lotus Romey-Yu  
 Luba Cherbakov  
 Lucy Wells

Lynn Ferber and Alan Rosenfeld  
 M Judith Stoner  
 Madeline Engelfried  
 Madonna Griffith  
 Maiya Martin Burbank  
 Mandy Doherty  
 Marcia Hamley  
 Marcia Kadanoff and Richard  
   Nironov Charitable Fund  
 Marcy Binder  
 Maria Porter  
 Marilyn Couch  
 Marina Soto  
 Marjorie McRae  
 Mark Crisp  
 Mark Huey  
 Mark Perry  
 Marsha White  
 Martin and Penny Schiller  
 Mary Felice Crowe  
 Mary Ginnane  
 Mary Heffernan  
 Mary Lavelle  
 Mary Scriven  
 Matt and Katherine Brown  
 Max Seger  
 Maya Noble  
 Megan Schenk  
 Melinda Redburn  
 Melissa Cadwallader  
 Michael Toth  
 Michelle Kashinsky  
 Mike Mckinsey  
 Miriam Schwartz and Adam  
   Caniparoli  
 Mona Buckley  
 Morley and James Knoll  
 Nayoun Kim  
 Niki Merrigan  
 Noah Lieberman  
 Olivia Nathan  
 Os Reynolds  
 Patricia and Frank Wilson  
 Patricia Hutchinson  
 Patrick Casanova  
 Patti MacRae and Tim Rowan  
 Peggy Harkins  
 Phyllis Oster  
 Priscilla Lightbourne  
 R.W. Blue  
 Richard Patterson  
 Rob and Kathy Felder  
 Robert Pope  
 Roberta Margolis  
 Robyn Webb  
 Rodney Crislip  
 Ronald Gehrmann  
 Ruby Welch

Ruth Marquis  
 Ryan Kennedy  
 Samantha and David Van Der  
   Merwe  
 Sammy Rios  
 Sandra Macphail  
 Sandy Schrw  
 Sarah Merten  
 Sarah Rosenberg  
 Sascha Blocker  
 Scott and Rachael Anderson  
 Scott Campbell  
 Shannon & Steve Planchon  
 Sharmane Grady  
 Sharon Gavin  
 Sheila Grayson  
 Sheila Pastore  
 Sidne Lewis  
 Skye Kychenthal  
 Socorro Hernandez  
 Sonia Sabnis  
 Stella Voreas  
 Stephanie Arnold  
 Stephanie Gaslin  
 Stephen Jackson  
 Steve Albert & Janie  
   Goldenberg, in honor of  
   Michelle Kashinsky  
 Steve Neighorn  
 Suhaila Meera  
 Susan and Steve Hall, in honor  
   of Philip Cuomo  
 Susan Giese  
 Susan Heydon  
 Susan Shattuc  
 Susan Stavers  
 Suzanne Friend  
 Tabatha de la Rosa  
 Tamara Sorelli  
 Ted Rooney  
 Thomas Carter  
 Tim Klein  
 Timmi Claveria  
 Tom Cantrell  
 Tracy Thornton  
 Valerie Ilsley and Bruce Murray  
 Valri and Vince Chiappetta  
 Vincent Martínez-Grieco  
 Virginia McNees  
 Virginia Baeta and Sarah  
   Wardrop  
 Wayne Ransier  
 Wendy Hambidge  
 Wendy Rankin & Richard Adams  
 Will Werner  
 William Gilliland  
 Yaakov Epstein  
 Zanny Geffel

# ABOUT THIRD RAIL REPERTORY THEATRE

The mission of Third Rail Repertory Theatre is to provide a dynamic artistic home for theatre audiences in Portland by fostering a professional local company, which, through collaboration and discipline, brings to life exceptional stories that provoke dialogue, encourage empathy, and inspire curiosity.

Third Rail Repertory Theatre is a Member of Theatre Communications Group (TCG), the national organization for the American theatre.

## BOARD OF DIRECTORS

Mark Takiguchi, President  
Alex Haslett, Secretary  
Dorothy Bocian, Treasurer  
Matt Brown  
Cheryl Ching

Kevin Kearns  
Jennifer Lin  
Maureen Porter  
Pancho Savery

Third Rail Repertory Theatre receives support from the Oregon Arts Commission, a state agency funded by the State of Oregon and the National Endowment for the Arts.

## CONTACT INFORMATION

Third Rail Repertory Theatre  
PO Box 96063  
Portland, Oregon 97296

Office: 503-546-6558  
Box Office: 503-235-1101  
Email: [info@thirdrailrep.org](mailto:info@thirdrailrep.org)

## ADVISORY COUNCIL

Scott Yarbrough, Founding  
Artistic Director  
Mary Chaffin  
Ava Schoen  
Kerry Cobb

Jim Cox  
Penny Greenwood  
Nicola Sysyn

---

## COMPANY & STAFF

Lauren Allison  
Malavika Arun  
Kelsea Vierra Ashenbrenner, Bookkeeper  
Lane Barbour  
Kushi Beauchamp  
AC Campbell, Box Office and Front of House  
Rae Davis  
Amy Driesler  
Emily Eisele  
Melody Erfani  
Carl Faber  
Amy Beth Frankel  
Ryan Gamblin  
Kayla Hanson  
Paige Havraniak, Box Office and Front of

House  
Ash Heffernan  
Matthew Jones, Fiscal Manager  
Michelle Kashinsky, Associate Producer  
Diane Kondrat  
Damon Kupper  
Isaac Lamb  
Jennifer Lin  
Rebecca Lingafelter  
Mack Mae, Box Office and Front of House  
Tessa May  
Kristen Mun-Van Noy  
Cynthia Shur Petts  
Darius Pierce  
Maureen Porter, Managing Artistic Director

Alex Ramirez de Cruz  
Kerry Ryan  
Pancho Savery, Literary Manager  
Maddy Schultz  
Sarah Smith  
Joellen Sweeney  
Samson Syharath  
Ithica Tell  
Julana Torres  
Alea Tran, Patron Services Coordinator  
Niels Truman, Box Office and Marketing Associate  
Karen Trumbo  
Mark Valadez  
Rolland Walsh  
Damaris Webb

---

## 2025-26 SEASON COMPANY

Eric Adams  
Martín Aguas  
Ellie Barbuto  
Elecia Beebe  
Tovah Behar  
Bryan Boyd  
Demara Cabrera  
LeeAnn Ducker  
Cullen Elliott  
Rachel Errico  
Joel Ferraro  
Jimmy Garcia

Molly Gardner  
Stephanie Gaslin  
Samantha "Sam" Kemp  
Ruby Keyes  
Saibi Khalsa  
Peter Ksander  
Erin MacGillivray  
Sarah Magen  
Samuel Manilla  
Kristina Mast  
Melory Mirashrafi  
Leif Norby

Yolanda Porter  
Rose Proctor  
Ava Schmidt  
Teague Shattuck  
Cole Songster  
Jonathan Thompson  
Ben Tissell  
Abigail Torres  
Alannah Walker  
Joshua Weinstein  
Solomon Weisbard  
Joshua Yoon

Ensure another  
20 Years of  
electrifying  
theatre.

Donate to  
Third Rail today.



PHOTO BY OWEN CAREY

**muse**

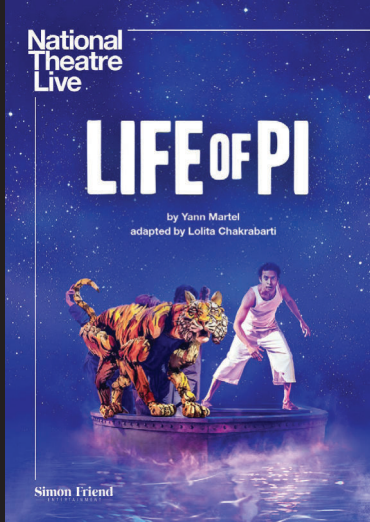
wine bar

An intimate space to enjoy well-crafted wine of good  
value — right across the street from CoHo Theatre.

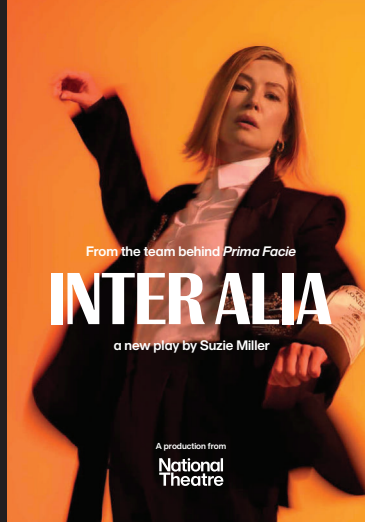
2264 NW Raleigh St.



# National Theatre Live



December 10 at 7 pm

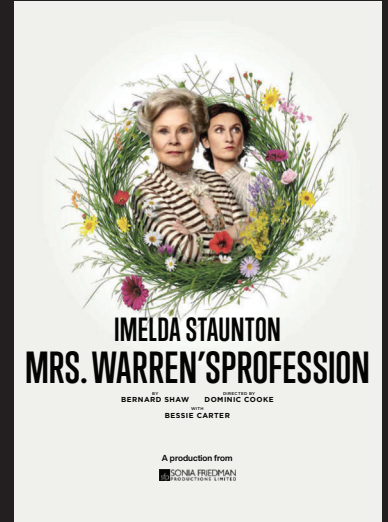


December 11 at 7 pm

*Open Captioned*

December 13 at 7 pm

December 14 at 2 pm



December 12 at 7 pm

December 13 at 2 pm

December 14 at 7 pm

*Open Captioned*



Coming in 2026

## December 10-14, 2025

Third Rail at CoHo Theatre · 2257 NW Raleigh St.

The best of British Theatre, screened in High Definition.



Learn more and buy tickets  
at [thirdrailrep.org/nt-live](https://thirdrailrep.org/nt-live)

Become a Member for access to every NT Live screening.

Presented by **THIRD RAIL**